

# The 3-in-1 solution for Alignment, Balancing & Vibration

Two award-winning tried-and-tested measurement systems from PRÜFTECHNIK now come together: The new smartSCANNER™ combines smartALIGN® shaft alignment with VIBSCANNER® vibration analysis in a single device.



## Shaft Alignment

## Vibration measurement

## Balancing

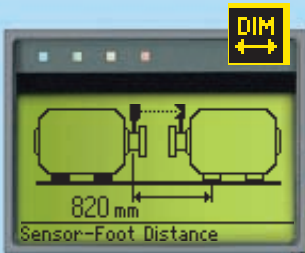
- Machine vibration
- Horizontal alignment
- Balancing
- Bearing condition
- RPM
- Machine train alignment
- Gear diagnosis
- Temperature
- Machine diagnosis
- Process parameters
- Cavitation
- Softfoot
- Vertical alignment
- Data collection



# Alignment readings in three smart steps

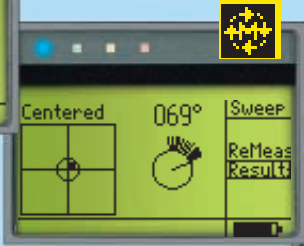
## Dimensions

The graphic display and the status line ensure simple entry of machine dimensions.



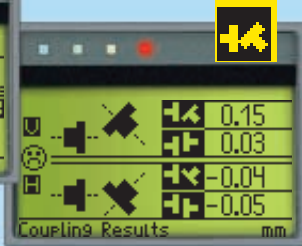
## Measure

On-screen beam adjustment is assisted by the computer LEDs. The auto start / stop allows measurement to start at any shaft position and in any direction.



## Result

The alignment condition is fully described by the LED indicators, the smiley, the graphical display and the coupling and foot results.



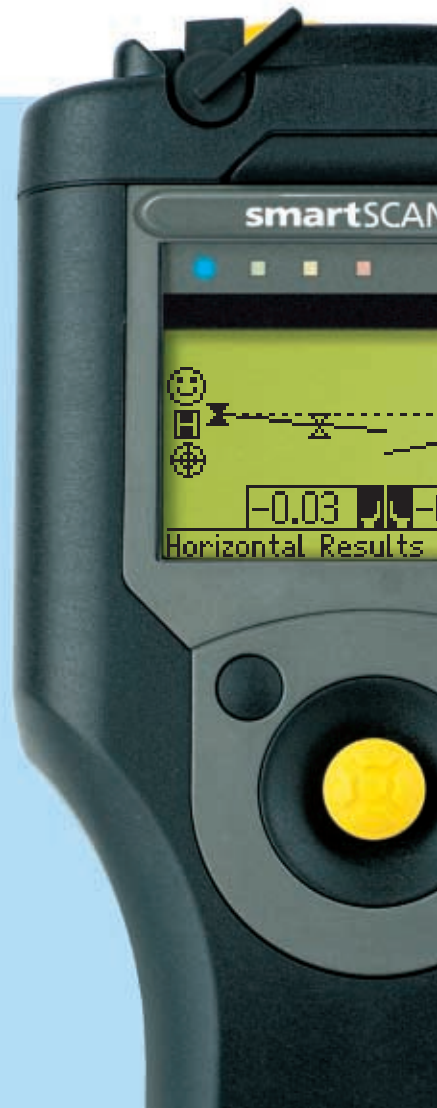
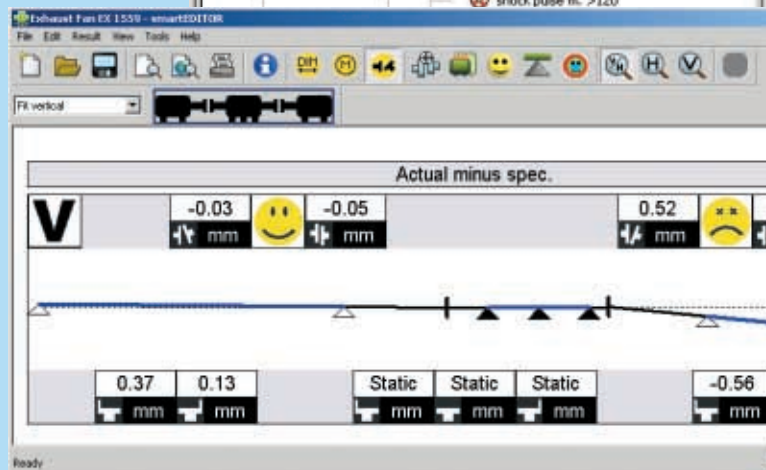
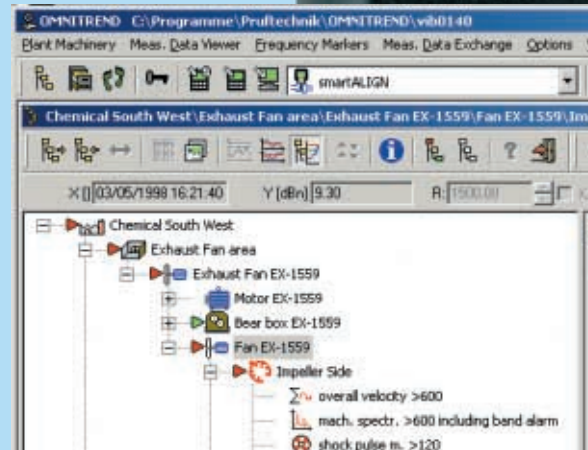
## Live move

Both horizontal and vertical live moves can be monitored on the display. The bold arrow indicates the direction to move the machine feet.

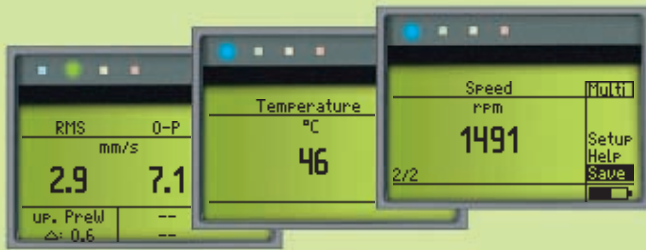


## Alignment software

The smartSCANNER™ package includes the popular smartREADER software for the viewing of alignment data. The optional smartEDITOR software is available for editing the files.



# Data collection and machine diagnostics

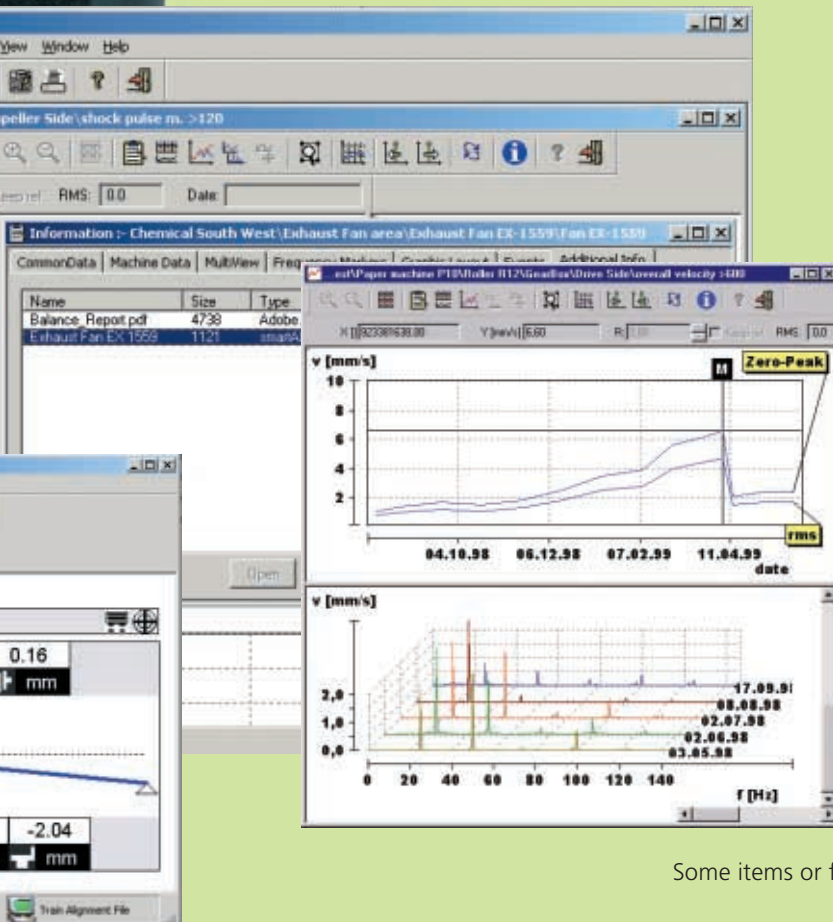


## Built-in sensors

- The rugged, patented accelerometer simultaneously measures machine vibration, cavitation and the high-frequency shock pulses emitted by bearings.
- The retractable, flexible probe for temperatures from -50°C to +100°C.
- Non-contact RPM measurement.

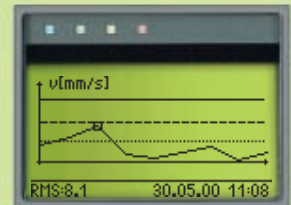
## OMNITREND® PC software

For the first time, machine data from alignment and condition monitoring can be transmitted and administrated in a joint database in the tried-and-tested OMNITREND® software.



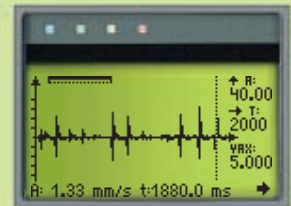
## Trending

Follow the development of machine defects using trend curves in the instrument or in the OMNITREND® software if the instrument is used as data collector.



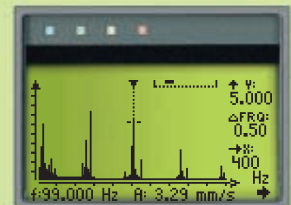
## Signal analysis

Time signals and orbits detect damage in low-speed machines, gearboxes or turbo machinery.



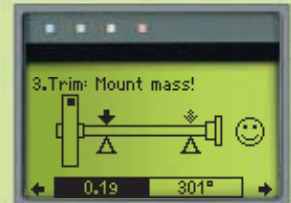
## Machine diagnosis

FFT analysis with enveloping is provided for the diagnosis of machine condition, bearing condition and gear faults.



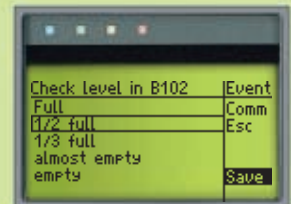
## Balancing

Allows one or two plane machine balancing in situ.



## Electronic notepad

Next to measurement tasks, visual inspection tasks appear as a pick list for entry of inspection data. (e.g. 'Check oil level')



Some items or features are optional and not part of the standard package.

# In detail

## Sensors & interfaces

Measure important parameters directly. Use built-in transducers or external sensors attached to rugged connectors.

## LED indication

Four LEDs show ISO alarm and alignment condition:  
blue = excellent,  
green = acceptable,  
yellow = warning,  
red = alarm.

## Graphic display

Backlit screen with large intuitive symbols and text in different languages.

## Joystick navigation

Easy to use, simple to learn!  
One joystick and two function keys are all the operating controls you need - whether you are right or left-handed.

## Power to last

A practical quick-change rechargeable battery in the handle guarantees 8 hours of operation.



## Benefits of the 3-in-1 solution

Data collection, machine analysis and correction in one instrument

All the data in one maintenance database

The ideal partner for every service provider

Flexible and modular – grows with your needs

All you need in a case



## More Info

smartALIGN® and VIBSCANNER®, the two systems that combine their functionality in smartSCANNER™, are also available as stand-alone shaft alignment and vibration analysis systems respectively. Detailed information about smartALIGN® and VIBSCANNER® features and capabilities are available in the two brochures that we will be pleased to send you.



Visit us at [www.pruftechnik.com](http://www.pruftechnik.com)



PRÜFTECHNIK AG  
D-85737 Ismaning, Germany  
[www.pruftechnik.com](http://www.pruftechnik.com)  
Phone: +49 (0)89 99 61 60  
Fax: +49 (0)89 99 61 62 00  
eMail: [info@pruftechnik.com](mailto:info@pruftechnik.com)

**Productive maintenance technology**